

**WHEDco**



**ANNUAL REPORT**



**2018**



# About Us

WHEDco's mission is to give the South Bronx access to all the resources that create thriving neighborhoods - from high-quality early education and afterschool programs, to fresh, healthy food, cultural programming, and economic opportunity.

## **AFFORDABLE GREEN HOMES**

Beautiful, affordable homes are the foundation for healthy and stable families. We currently provide homes for 800 + people, including formerly homeless families, in two housing developments in the South Bronx: Urban Horizons (opened in 1997) and Intervale Green (opened in 2009). Bronx Commons, our third development (currently under construction), will create 305 affordable homes for an additional 800 people. All of our buildings incorporate green features, reflective of our commitment to environmental sustainability.

## **EDUCATION & YOUTH DEVELOPMENT**

Every child deserves high-quality learning opportunities from an early age. Each year, WHEDco fosters high academic achievement for over 3,100 children from infancy to high school, through our EarlyLearn NYC, Head Start, Home-Based Childcare (HBCC), Afterschool and Teen programs.

## **COMMUNITY & ECONOMIC DEVELOPMENT**

Small business development is an effective pathway toward financial security. Each year, WHEDco helps over 500 individuals launch and operate small businesses through our Home-Based Childcare Programs, Bronx CookSpace Kitchen Incubator, and Commercial Revitalization initiatives.

## **FAMILY SUPPORT & COUNSELING SERVICES**

Every parent needs help to ensure that their children grow and learn in a healthy environment. WHEDco provides a support system to over 3,000 individuals and their families each year by connecting them to physicians, mental health counselors, nutritionists, public benefits, housing and employment assistance, legal aid and immigration services, and emergency food.

## **ARTS & CULTURE**

Arts and culture are essential to a community's wellbeing. Last year, over 5,000 people attended free and low-cost arts events and programs offered by our Bronx Music Heritage Center (BMHC). The BMHC will expand into The Bronx Music Hall, a performance venue and the cultural centerpiece of the Bronx Commons development.

# A WORD FROM OUR PRESIDENT

Dear friends,

The Bronx is “booming” – so say the news headlines. New waves of development promise to bring increased economic activity to the borough, beginning with more housing.

While the prospect of more homes and greater economic opportunity is certainly positive for New Yorkers, there are many Bronxites who are rightfully concerned about housing affordability, an increase in the cost of living and, ultimately, displacement. Those of us who have lived or worked in the Bronx over the past decades have already begun to see the impact of the “boom” on some of our neighborhoods.

Fully aware of the challenges that lie ahead, WHEDco has continued to make important strides in our efforts to build a more equitable, vibrant Bronx where all families can lead stable, healthy lives.

This year, we completed a refinancing at our flagship Urban Horizons building, which has provided safe, affordable housing for 132 families, including formerly homeless individuals, since 1997. Many families in this former hospital building have lived here from the very beginning, raising their children and grandchildren.

The refinancing allows us to carry out important rehabilitation and improvements, while ensuring that rents remain permanently affordable for all of our tenants.

Additionally, after a rezoning was approved earlier this year for a 92-block stretch along Jerome Avenue and the surrounding area where Urban Horizons is located, we expanded our efforts to engage even more local residents, small business owners and workers across the broader neighborhood, to listen to what they had to say, advocate for their hopes and concerns, and together, come up with solutions to respond to them.

These, and many other achievements, are highlighted in the pages to follow. Of course, none of this would be possible without the support of our friends, partners, and colleagues. Thank you!

Looking forward to another year of great work together!



Davon Russell  
President, WHEDco



**DAVON RUSSELL, JOINED BY CURRENT AND FORMER WHEDCO AFTERSCHOOL PROGRAM PARTICIPANTS.**

# HOUSING

WHEDco provides affordable homes for 800+ people in two housing developments in the South Bronx. Our flagship building, Urban Horizons, is located in the Concourse/Highbridge/Mount Eden area and features 132 apartments. Intervale Green, which opened in 2009 in the Crotona Park East and Morrisania area, consists of 128 apartments. Currently under construction, our third affordable housing development, Bronx Commons, is located in the Melrose section of the Bronx and will create an additional 305 affordable homes.

## URBAN HORIZONS

Urban Horizons began undergoing capital improvements in 2018, which will impact its residential and program/community areas.

Residential improvements include updates to residential apartments –such as new kitchen cabinets and countertops, bathrooms in some apartments, as well as installing features like grab bars and slip-resistant flooring to make apartments safer for our aging residents. We have also begun updating elevators, installing a new intercom system for residents, and making repairs to the building façade. We have taken measures to save water and heating expenses, including

installing new shower heads and weather-stripping exterior doors. This work is funded by the NYC Department of Housing Preservation and Development (NYC HPD), the New York City Housing Development Corporation (NYC HDC), and the Federal Home Loan Bank Affordable Housing Program (AHP).

Meanwhile, program/community area improvements include renovations and upgrades to Bronx CookSpace, the Early Childhood Discovery Center, the Institute for Family Health medical clinic, our Youth Leadership Center, and other areas where WHEDco staff members provide direct services to the community. This work is funded by a \$2M NYS Homes and Community Renewal (HCR) Community Investment Fund (CIF) award, as well as \$500,000 from Councilmember Vanessa Gibson.

**In November 2018, we received an award of \$2.1M from the Federal Home Loan Bank of New York's Affordable Housing Program (AHP), which will allow us to make further upgrades to residential apartments and common areas, including hallways, the lobby, elevator cabs, and exterior landscaping.**



**JAMILA CURRY HAS LIVED IN URBAN HORIZONS FOR 20+ YEARS. SHE CREDITS WHEDCO WITH GIVING HER THE STABILITY SHE NEEDED TO RAISE HER FAMILY.**

## INTERVALE GREEN

We continued to engage tenants and community members at Intervale Green through initiatives such as seasonal tenant farming on the building's rooftop urban farm, cooking demonstrations with fresh produce from the farm, and other events and activities for local children and families.

The farm season closed with a Harvest Festival, during which attendees had fun creating Halloween masks, coloring-in harvest-themed art, and building butterflies from healthy food ingredients.

**During the 2018 season, the Intervale Green rooftop urban farm grew tomatoes (cherry, bigbeef), peppers (jalapeño, serrano), okra, eggplant, collard greens, sugar baby watermelons, onions, tomatillos, and strawberries, as well as a large variety of herbs, including sage, thyme, scallions, oregano, lavender, cilantro, basil, and Greek oregano.**



Young resident from WHEDco's Intervale Green building participates with her family at the 2018 Harvest Festival, hosted by our rooftop urban garden at Intervale Green.

## BRONX COMMONS

By December of 2018, WHEDco's third affordable housing development, Bronx Commons, stood fully erected at 12 stories high. The 426,000 sq. ft. mixed-use campus in Melrose will feature 305 units of affordable housing—ranging from studio apartments to three-bedrooms—to accommodate formerly homeless families and individuals, including victims and survivors of domestic violence, in addition to low-income households earning between 30-110 percent of the Area Media Income (AMI).

Developed by WHEDco and BFC Partners, the building is environmentally sustainable, with a 428-panel rooftop solar installation, which will be among the largest such installations on an affordable housing development in New York City, among other features.

**Tenants are expected to move into Bronx Commons in the Fall of 2019.**



Rendering of Bronx Commons, WHEDco's third affordable housing development, currently under construction. Completion is expected in the fall of 2019.

# COMMUNITY DEVELOPMENT

WHEDco works with local residents to make neighborhoods cleaner, safer, and more vibrant. We also collaborate with local merchants to build bustling shopping districts that respond to local shoppers' needs. Our staff provides one-on-one assistance to help entrepreneurs in the communities in which we work to start or grow their businesses.

## CROTONA PARK EAST / SOUTHERN BOULEVARD

In 2018, WHEDco conducted a community needs assessment in the Crotona Park East/Morrisania section of the Bronx, home to our Intervale Green building, to update data on residents' resource and neighborhood needs. This neighborhood, centered around Southern Boulevard, is currently being studied for a potential rezoning by the NYC Department of City Planning.

Through the Commercial Corridor Challenge – a collaboration between Local Initiatives Support Corporation (LISC) NYC, Citi Community Development and the NYC Department of Small Business Services (SBS) Neighborhood 360° Program– we also worked with businesses along Southern Boulevard to improve their storefronts

and better incorporate technology and marketing. We also worked with local organization YUCA Arts on a wayfinding and marketing campaign for the corridor, and rebuilt and expanded the Southern Blvd website and social media presence.

**1,300 +**

**PEOPLE SURVEYED IN OUR COMMUNITIES AS PART OF OUR NEIGHBORHOOD ASSESSMENTS**



**500 +**

**MERCHANTS SERVED IN THE COMMERCIAL CORRIDORS AROUND OUR BUILDINGS**



**750 +**

**LOCAL RESIDENTS ATTENDED OUR COMMUNITY ENGAGEMENT EVENTS**



**BRONX ARTIST CHARLIE ELO WORKED WITH WHEDCO & SMALL BUSINESS OWNERS TO PAINT GRAFFITI MURALS ON BUSINESS ROLL-DOWN GATES ON SOUTHERN BLVD**

## CONCOURSE / HIGHBRIDGE / JEROME AVE.

In 2018, the City of New York approved a rezoning plan for a 92-block stretch along Jerome Avenue, impacting areas within the Concourse, Morrisania, Highbridge, Mount Eden, and other neighborhoods in the Bronx.

WHEDco conducted a survey of community members in Concourse / Highbridge to gain a better understanding of their hopes and concerns, increase our knowledge of the potential impact of the rezoning, and further extend our engagement efforts in the broader neighborhood around our Urban Horizons building -located within the rezoned area. We also partnered with Barretto Bay Strategies and United Auto Merchants Association (UAMA) to help conduct the Jerome Avenue Business Needs Study, which provides a detailed picture of the challenges of businesses throughout the Jerome Avenue area. Both studies were funded by the NYC Department of Small Business Services Neighborhood 360° Program.

WHEDco also engaged local merchants, property owners, and community groups around Jerome Ave. through business assistance workshops, public space and safety youth-business initiatives, a holiday lighting, and scavenger hunts, among other initiatives.

## MELROSE / EAST 161st STREET

WHEDco conducted a cultural asset mapping and needs assessment in the Morrisania/Melrose neighborhood to develop a cultural vision around Bronx Commons and the Bronx Music Hall, in partnership with The DreamYard Project and New York University (NYU). Survey respondents indicated that they engage with culture at outdoor arts activities, schools, libraries, and community centers. Community members expressed an interest in more cultural activities through afterschool programs, parks, classes, festivals, and performances. Additionally, respondents identified community safety and youth engagement as primary neighborhood concerns.

WHEDco has continued to engage community members in place-affirming activities and events such as the Melrose Holiday Tree Lighting in Railroad Park and our annual Bronx Music @ Melrose street fair, in which we hosted activities, provided resources, and showcased local talent for community members to re-take ownership of public space and advance community safety.



WHEDco teens Monserrat (far right) and Melkyn (third from right) worked with designer Chat Travieso (fourth from right) on the Yes Loitering Project, which explores youth and public space.



"Bx Marks the Spot" was part of an initiative to gather community data for WHEDco's Morrisania Arts and Culture Survey, funded by the NYC Department of Cultural Affairs.

# EARLY CHILDHOOD DEVELOPMENT

Each year, WHEDco ensures that thousands of children, from early infancy through preschool, have access to high-quality, affordable childcare and early childhood education programs.

## PRESCHOOL

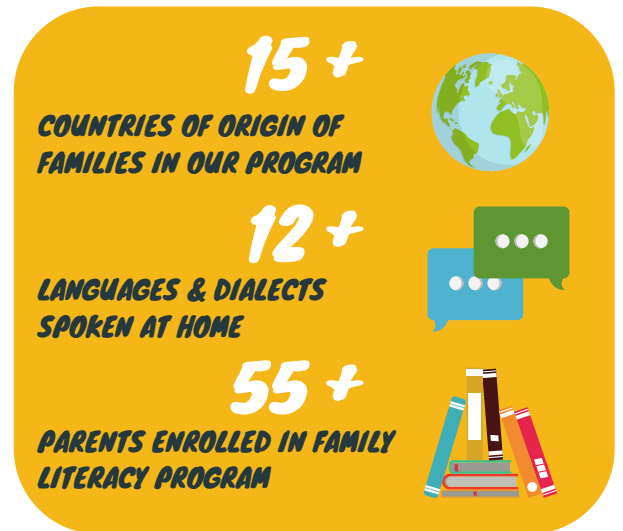
Our Urban Horizons Early Childhood Discovery Center is a full-day, full-year EarlyLearn NYC Head Start program that serves 111 preschool children. It offers a nurturing environment that allows children to develop confidence, think creatively, analyze information and communicate effectively. Every year, 100% of the students graduate prepared for kindergarten, ensuring that they begin their school careers ready to succeed.

## FAMILY LITERACY

WHEDco also encourages parents from our Early Childhood Discovery Center to participate in our Family Literacy Program, which aims to build a bridge between home and school by drawing upon families' strengths, cultures, languages and personal histories. It focuses on projects that help parents share their culture and language with their children, while developing presentation skills in English and with the use of technology.

The program's approach is based on the idea of transformative learning, using autobiographical writing as a tool to generate language, literacy development, vocabulary expansion, self-reflection and personal growth.

In April 2018, program participants gathered with their peers, WHEDco staff, and program funders to celebrate their accomplishments and share their stories. Our participants—who hail from countries all across the globe, from Latin America to West Africa—say that their desire to be better advocates for their children is what motivated them to learn English.



**MELI IS ONE OF DOZENS OF PARENTS FROM THE COMMUNITY WHO BENEFIT FROM OUR FAMILY LITERACY PROGRAM**



## HOME-BASED CHILDCARE PROGRAM

WHEDco's Home-Based Childcare Program improves the quality of childcare available to New York City families, increases children's access to early structured learning, and supports home-based childcare providers throughout the City with professional development opportunities, as well as ongoing coaching and licensing assistance. WHEDco helps licensed and registered home-based childcare providers to create high-quality childcare programs and become successful small business owners, ensuring that children in their care have access to developmentally-appropriate early learning opportunities, excellent educational curricula, nutritious food, motor development, and physical exercise.

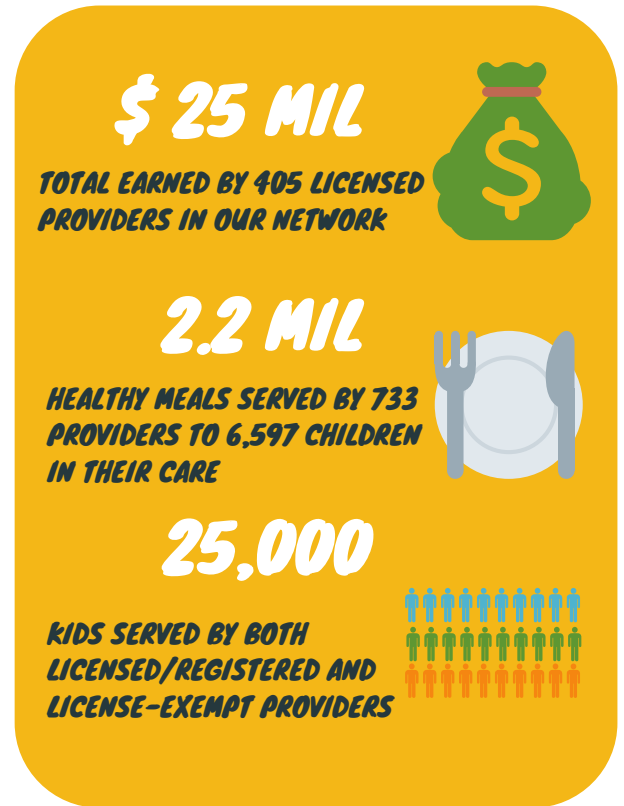
Our goal is to ensure that children in home-based childcare environments gain the skills, knowledge, and confidence necessary to succeed in school and beyond, while allowing parents to secure the childcare they need in order to pursue their own career and educational goals. In addition, we ensure that over 12,000 unlicensed childcare providers throughout the city meet health and safety childcare standards.

## SPOTLIGHT: MEET MILAGROS CARBAJAL

Millie worked in the hotel industry for over a decade. She recalls leaving her daughter with a babysitter for most of the day while she worked long, demanding hours. When Millie became pregnant with her son, she decided to switch careers in order to spend more time with him. In 2010, she opened her home-based childcare business, caring for 2-3 kids, in addition to her son.

Today, Millie's group family daycare serves a total of 16 children. Through WHEDco, she became enrolled in the USDA Child and Adult Care Food Program (CACFP) – a federal healthy food reimbursement program – and earned her Child Development Associate (CDA) Credential, the most widely recognized credential in early childhood education (ECE) in the U.S.

Millie credits much of her success, and the knowledge she's gained, to the support and training she's received from WHEDco over the years. "WHEDco helped me with everything, from providing advice and offering technical support, to allowing me to see the full potential and value of the work that I'm doing," says Mille. "I'll be forever grateful to WHEDco."



Milagros Carbajal  
Group Family Daycare Provider

# EDUCATION & YOUTH DEVELOPMENT

WHEDco operates three extended day programs, a Teen Program and a Summer Arts Day Camp that offer academic and cultural enrichment, coupled with comprehensive in-school mental health services for children and their families during the school day.

Our youth development initiatives infuse arts, physical fitness, and social justice leadership to strengthen the academic, critical thinking and literacy skills of 1,200+ elementary, middle school, and teenage youth, while instilling healthy behavior practices and outlets for creative expression and social-emotional well-being.

## PROJECT STEP

Project STEP (Students Toward Educational Promise) is a middle-to-high-school transition program led by WHEDco for students in grades 6th-8th, which combines critical thinking, social activism and academic enrichment.

Project STEP engages middle school youth through service learning activities that support their development into community leaders, activists and advocates.

Students who participate in Project STEP receive comprehensive support during the high school admissions process, including one-on-one sessions with WHEDco staff, exam preparation for the NYC Specialized High School Admissions Test, and access to high school fairs.

## TEEN PROGRAM

WHEDco's Teen Program, a college access initiative for students in grades 9 through 12 in the South Bronx, provides high quality programming to combat the barriers encountered by many students to complete high school and go to college.

Teen Program participants receive the academic support they need to succeed, while immersing themselves in career exploration opportunities, internships, and a series of educational, cultural, and recreational activities throughout the year.

**In 2018, 100% of WHEDco's Teen Program graduates enrolled in college!**



**MIDDLE SCHOOL STUDENT FROM WHEDCO'S AFTERSCHOOL ENRICHMENT PROGRAM AT PS/MS 218 RECEIVES MENTORING DURING OUR ANNUAL HIGH SCHOOL FAIR**

## SPOTLIGHT: NATALIA BAEZ

Born to immigrant parents who hailed from the Dominican Republic, Natalia was raised in the Bronx by her single mother after her father passed away. She remembers moving often as a child and seeing her mom—who worked as a home attendant—struggle to pay the bills.

Natalia has been a lifelong participant of WHEDco's education programs, from our Early Childhood Discovery Center and our Afterschool Enrichment Program at PS/MS 218, to Project STEP, JAM, and Teen Program. Today, she is a high school senior at Manhattan Village Academy, a high-performing public high school in Chelsea, Manhattan. She recently won a full tuition scholarship from the Posse Foundation to attend Lafayette College in Easton, Pennsylvania – a tremendous accomplishment, considering that only 10 students were awarded this scholarship, out of 3,300 who applied. She was also awarded a renewable Garden of Dreams Inspire Scholarship.

"I feel like I've done so much, and I'm only in high school!" gleams Natalia. "If I didn't have WHEDco, I wouldn't be where I am today," she says.



Natalia Baez  
High School Senior,  
Teen Program Participant



**1,200**

**STUDENTS IN GRADES  
K-12 SERVED  
ANNUALLY THROUGH  
OUR YOUTH  
PROGRAMS**



**64 %**

**OF 8TH GRADERS IN  
PROJECT STEP WERE  
ACCEPTED INTO HIGH-  
PERFORMING HIGH  
SCHOOLS**



**100 %**

**OF HIGH SCHOOL  
SENIORS IN OUR  
TEEN PROGRAM ARE  
ACCEPTED INTO  
COLLEGE EVERY YEAR**



**87 %**

**INCREASE IN  
SEXUAL HEALTH  
KNOWLEDGE BY 6TH  
GRADE STUDENTS IN  
OUR JAM PROGRAM**



Student participates in class during a JAM session in 2018

## SEXUALITY & REPRODUCTIVE HEALTH EDUCATION

Did you know teen pregnancy rates in the South Bronx are seven times higher than they are in neighborhoods like Chelsea, Manhattan?

WHEDco is working to change this statistic through our unique peer-led sex education program, JAM (Just Ask Me). JAM is a robust sexual and reproductive health education program for students in 3rd through 8th grade who participate in our afterschool programming at PS/MS 218. Youth receive interactive lessons covering topics like puberty and anatomy, healthy relationships and consent, gender and sexual orientation, and protection methods, following an age-appropriate curriculum.

In JAM, students find a safe space to learn about their bodies and to dispel the myths they hear around them and see online. Meanwhile, the high school students who serve as peer educators gain an even deeper understanding of the subjects and become resources to other students beyond the classes they lead.



Melkyn Acosta  
High School Senior,  
JAM Peer Educator

## SPOTLIGHT: MELKYN ACOSTA, PEER EDUCATOR

Melkyn Acosta is a senior at Metropolitan Soundview High School. His involvement with WHEDco began during preschool, when he attended our Early Childhood Discovery Center, and continued through our Afterschool Enrichment Program at PS/MS 218. He currently participates in Teen Program, and he works as a peer educator in our sexuality and reproductive health education program, Just Ask Me (JAM).

Melkyn values his role as a peer educator, and is proud to be part of an initiative that empowers students to take charge of their bodies and their sexuality. He says most of his high school peers have not received sex education, adding that this contributes to a lot of misinformation.

“I love teaching middle schoolers things they can use as they grow up,” Melkyn says. “They need comprehensive sex ed so they know about safe sex and healthy relationships.”

Melkyn was recently awarded a Garden of Dreams Inspire Scholarship to attend SUNY Albany in the Fall of 2019.

# FAMILY SUPPORT

WHEDco's Family Support Department provides comprehensive support services to low-income families to help them become more stable and better able to meet their essential needs and navigate everyday challenges.

**1,300+**

**INDIVIDUALS SCREENED FOR PUBLIC BENEFITS ELIGIBILITY**



**\$4 MIL+**

**IN PUBLIC BENEFITS RECEIVED BY 890+ CLIENTS ENROLLED BY WHEDco**



**454**

**INDIVIDUALS CONNECTED TO LEGAL ASSISTANCE SERVICES**



**1,800+**

**INDIVIDUALS RECEIVED GROCERIES THROUGH OUR COMMUNITY FOOD PANTRY**



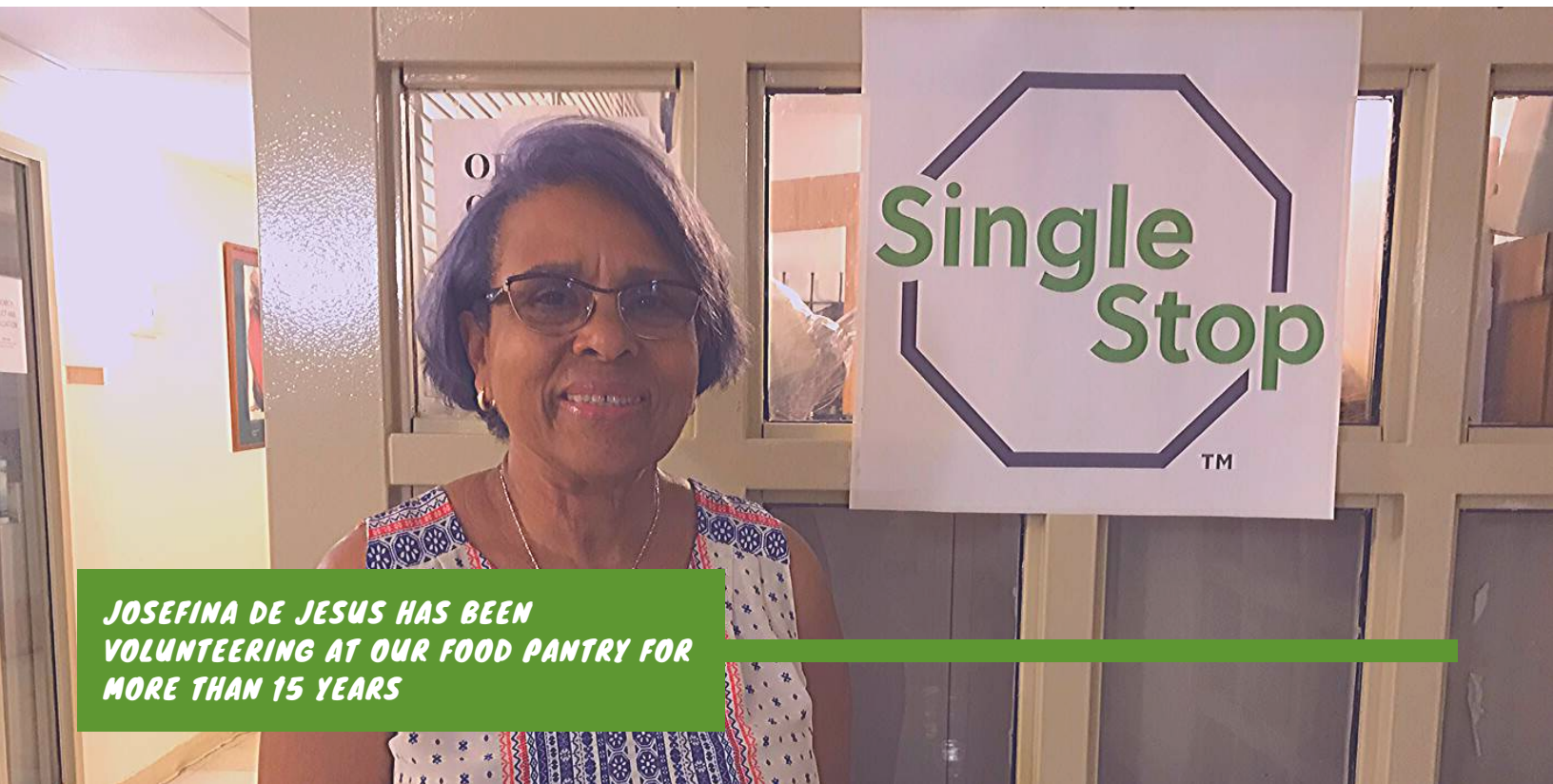
Services include emergency food assistance through our Community Food Pantry, public benefits enrollment, legal & immigration counseling, mental health counseling and support groups, as well as social workers embedded in WHEDco's three partner schools and our Head Start to provide school-based student and family support.

## **VOLUNTEER SPOTLIGHT: JOSEFINA DE JESUS**

Josefina, who moved to the Bronx from the Dominican Republic in the 1980's, has been volunteering at WHEDco's Food Pantry for over 15 years. Every week, she assists with organizing, preparing and distributing groceries to families in our community.

She first came to WHEDco at a time when she needed help. After experiencing firsthand the impact that our services can have on people during a time of need, she decided to give back by volunteering at the organization.

"Volunteering at WHEDco has been very beneficial to my wellbeing, because I was depressed. They're wonderful to me, and I love doing whatever needs to be done," says Josefina.



**JOSEFINA DE JESUS HAS BEEN VOLUNTEERING AT OUR FOOD PANTRY FOR MORE THAN 15 YEARS**

# ARTS & CULTURE

WHEDco opened the **Bronx Music Heritage Center (BMHC)** in 2012 to foster creative place-making and build a stronger connection to Bronx music. The BMHC provides free and low-cost access to the arts for local residents, while serving as a platform and source of income for local artists. In addition, the BMHC contributes to the rich cultural fabric of the Bronx by creating partnerships with other organizations and venues.

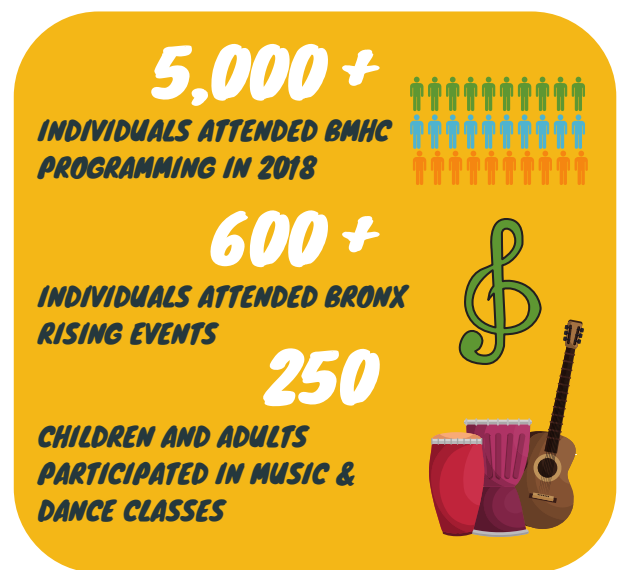
During 2018, the BMHC produced 11 events in our monthly multidisciplinary series, Bronx Rising, as well as three ten-week cycles of our Music and Dance Classes (MAD) for children and adults. It hosted three exhibitions showcasing local artists and incorporating Bronx-based themes, including a photography exhibit by Rhyanna M. Santos chronicling the life of her father, Latin music legend Ray Santos. The BMHC also held many events with community partners, including “Palabreando,” a new open mic series co-hosted by Bocafoja and Carmen Bardeguez-Brown.

## IMPACT

The BMHC’s free and low-cost cultural programming is helping people of all backgrounds and income levels to participate in, benefit from, and enjoy the transformative power of the arts.

BMHC programming attracted visitors from across New York City. Primary audiences were residents from neighborhoods that are underserved by high quality, affordable, accessible cultural opportunities. Beneficiaries include new immigrants and linguistically isolated communities –particularly Latin American, West African, and non-Hispanic Caribbean and Central American populations.

The BMHC will move to its permanent facility, the **Bronx Music Hall** at Bronx Commons, in 2020.



**BRONX RISING! PARRANDA CON PARANDA, A PUERTO RICAN & GARIFUNA HOLIDAY CELEBRATION: THE FRENCH CONNECTION**

# SMALL BUSINESS DEVELOPMENT

## BRONX COOKSPACE

In 2018, WHEDco's small food business incubator kitchen, Bronx CookSpace, began offering expanded services as part of a new program model, including workshops to support kitchen members in managing their inventory, working with financial institutions, and refining their business plans. In order to streamline its work and better engage with its members, Bronx CookSpace launched a new website, [bronxcookspace.org](http://bronxcookspace.org), which allows kitchen members to create profiles, book kitchen time, and pay their bills online.

In keeping with our goal to attract new members, Bronx CookSpace held its first annual open house, which brought 56 attendees into the kitchen to sample products made by our members, and raised \$1,200 for the kitchen.

**230+**

**FOOD BUSINESSES SERVED SINCE 2002**



**51%**

**OF BRONX COOKSPACE TENANTS ARE BRONX-BASED BUSINESSES**



**66%**

**OF BRONX COOKSPACE CLIENTS IDENTIFY AS FEMALE**



**76%**

**OF BRONX COOKSPACE BUSINESSES ARE MINORITY-OWNED**



**IN 2018, BRONX COOKSPACE HOSTED 156 TOURS TO PROSPECTIVE MEMBERS**

# RESEARCH, POLICY & EVALUATION

WHEDco's Research, Policy and Evaluation (RPE) Department provides support for all of WHEDco's work, exploring trends in our programs and in our community to support the organization's efforts in innovative and responsive program design. The RPE Department determines the impacts WHEDco's programs have on participants and the community, and provides data and information for key stakeholders.

In 2018, the RPE Department completed, among other initiatives, two major research projects, one aimed at better understanding housing stability outcomes for formerly homeless families living in one of our buildings, and the other to design a comprehensive assessment tool for home-based childcare programs.

**Homelessness in New York City: A Case Study of Previously Homeless Families Residing in WHEDco's Urban Horizons Affordable Housing Development in the Bronx** underscores the importance of addressing affordable housing as a means to curb the homelessness crisis, which –at its core– reveals the profound impact of economic inequality and discrimination on our most vulnerable populations, mainly women, children, racial or ethnic minorities, the elderly, and others,

including those suffering from mental health illnesses and other medical conditions, as well as those who have experienced domestic abuse.

Taking into account the factors that contribute to homelessness, our longitudinal analysis of tenants in WHEDco's Urban Horizons building suggests that having access to stable housing with affordable rent has been key to maintaining long-term housing stability for formerly homeless families. In addition, the opportunity to connect to WHEDco's multi-service supports and programs has helped to form a stronger community and network for all families, especially those who were formerly homeless.

**WHEDco's Childcare Home Assessment & Support Tool (CHAST): Development and Implementation of a New Comprehensive Tool to Evaluate Home-Based Childcare** contributes to a deeper, more holistic understanding of home-based childcare so we may better appreciate and recognize its contributions to early care and education, advocate for more professional supports for providers and the childcare training, coaching, and home visiting workforce, and continue to improve the quality of care available to all children.



**WHEDCO GATHERS COMMUNITY DATA FOR ITS SOUTHERN BOULEVARD SHOPPER PREFERENCES SURVEY**

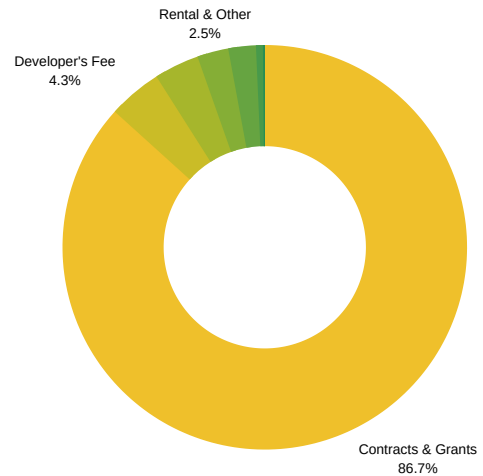


# FINANCIALS

## FINANCIAL STATEMENTS, DECEMBER 31, 2018 (EXCERPTS)

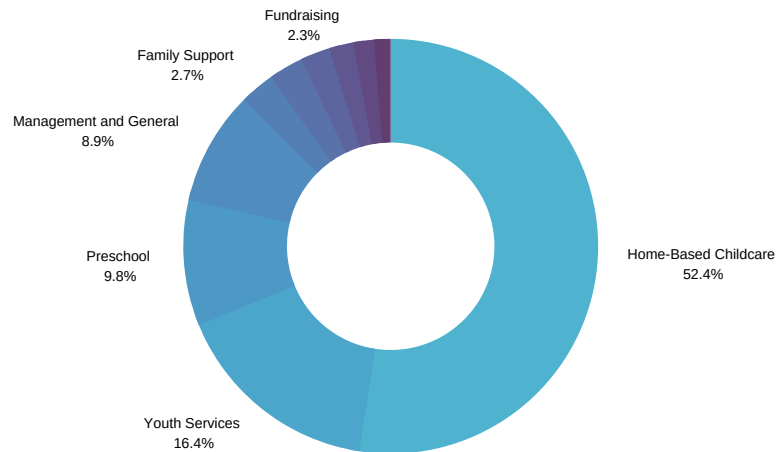
### UNRESTRICTED REVENUES

Contracts and Grants	\$18,156,855
Foundations (Including Releases)	\$1,135,546
Developer's Fee	\$906,134
Rental and Other Income	\$524,975
Individuals/Special Events	\$468,754
Investment Income	\$112,399
Donated Services	\$29,852
<b>TOTAL</b>	<b>\$21,334,515</b>



### EXPENSES

Home-Based Childcare	\$10,937,475
Youth Services	\$3,413,249
Preschool	\$2,033,821
Family Support	\$566,473
Community Development	\$572,658
Housing Development	\$392,203
Bronx Music Heritage Center	\$336,305
Bronx CookSpace	\$263,640
Management and General	\$1,853,194
Fundraising	\$488,384
<b>TOTAL</b>	<b>\$20,857,402</b>



### ASSETS

Total Current Assets	\$6,360,067
Fixed Assets	\$1,726,015
Other Assets	\$10,111,674
<b>TOTAL</b>	<b>\$18,197,756</b>

### LIABILITIES & NET ASSETS

Total Liabilities	\$3,562,191
Unrestricted Net Assets	\$10,796,143
Restricted Net Assets	\$3,839,422
<b>TOTAL</b>	<b>\$18,197,756</b>

# SPECIAL THANKS

## GOVERNMENT FUNDERS

### NEW YORK CITY

NYC Administration for Children's Services  
NYC Council  
NYC Department of Cultural Affairs  
NYC Department of Education  
NYC Department of Health and Mental Hygiene  
NYC Department of Youth and Community Development  
NYC Human Resources Administration  
NYC Mayor's Office of Criminal Justice  
NYC Small Business Services

### NEW YORK STATE

New York State Council on the Arts  
NYS Education Department  
NYS Department of Health  
NYS Office of Children and Family Services  
NYS Office of Parks, Recreation, and Historic Preservation  
NYS Office of Temporary and Disability Assistance

### FEDERAL

National Endowment for the Arts  
National Endowment for the Humanities (Humanities NY)

## INSTITUTIONAL DONORS

Altman Foundation  
Altour International, Inc.  
Amie Gross Architects  
Anonymous Corporation  
Anonymous Foundation  
Aronson Mayefsky & Sloan, LLP  
Avante Construction  
Bank Leumi  
Barclays  
Bernard and Anne Spitzer Charitable Trust  
BFC Partners  
BronxCare Health Systems  
Brown and Brown of Garden City  
Capital One Foundation  
Chamber Music America  
Champion Courier Inc.  
Charles P. Ferro Foundation  
Citi Community Capital  
Citi Foundation  
City Row  
Colgate-Palmolive Company  
Con Edison

Deutsche Bank Americas Foundation  
Edith Glick Shoolman Children's Foundation  
Estee Lauder Companies inc.  
Expanded Schools  
Frechette Family Foundation  
GAL Manufacturing Company LLC  
Garden of Dreams Foundation  
Greco's Deli  
Greenberg Traurig, LLP  
Grenadier Realty Corporation  
Hagedorn Fund  
Harlem Chocolate  
Hirschen Singer & Epstein LLP  
Jason D. Boroff and Associates PLLC  
Jenner & Block LLP  
JPMorgan Chase & Co.  
Kaplan Hecker & Fink LLP  
Kenneth Cole Productions  
Laurie M. Tisch Illumination Fund  
Lemle & Wolff Companies  
Lily Auchincloss Foundation, Inc  
Lincoln Center  
LISC New York  
M&T Charitable Foundation  
Mainland Media & FromTheBronx.com  
Marshall Wace Asset Management  
MAXIMUS Foundation  
Montrose Surveying Co. LLP  
MUFG Foundation  
Network for Good  
New World High School  
New Yankee Stadium Community Benefits Fund  
New York Community Trust  
New York Yankees Foundation  
Open Society Institute  
Penguin Random House  
Reverence  
Richards Hogan & Carron Sherry Foundation  
Rose M. Badgeley Residuary Charitable Trust  
Rosenblum Family Foundation  
Sam Ash Music Stores  
Santander Bank, N.A.  
Single Stop USA  
Stella and Charles Guttman Foundation, Inc.  
Sweet Preserves Inc.  
Target Corporation  
The Bronx Beer Hall  
The GOOD+ Foundation  
The Rachel Miller Fund  
The Richman Group Affordable Housing Corp.  
The Sweetie Pig Foundation, Inc.

Continued on next page

# SPECIAL THANKS

## INSTITUTIONAL DONORS

United Neighborhood Houses of New York  
United Restoration Services, Inc.  
United Way New York City  
van Ameringen Foundation  
WXY Architecture & Urban Design  
Y.H. Mirzoeff & Sons Foundation, Inc  
Zog Sports

## INDIVIDUAL DONORS

### \$100,000+

John D. Howard

### \$25,000 - \$50,000

Anonymous  
Lori & Alexandre Chemla

### \$10,000 - \$24,999

Tania Brief & Andrew Ehrlich  
Soledad & Bob Hurst  
David & Sybil Yurman

### \$5,000 - \$9,999

Anonymous  
Meghan Gallagher & Roger Gill  
Laurie & Jay Mandelbaum  
Pamela Sloan, Esq.

### \$2,500 - \$4,999

Arthur Gary and Cathy Aaronson  
Ronit Berkman  
Mark Boelhouwer  
Anthony Chen  
Karl & Luisa Knapp  
Scott A. Martin, Esq.  
Amy Roberts & Glenn Fogel  
Trudi Schraner  
Sean Simmons  
Sharmi Sobhan

### \$1,000 - \$2,499

David & Karen Ash  
Chris Callahan  
Linda & Geoffrey Field  
Samy Fouda  
Steve Hogden  
Sara Kay  
Henni & John Kessler  
Rebecca Kramnick & Philip Cohen  
Geeta Kuttiparambil  
Regina Linder  
Angelo J. Messina  
Michael Paranac  
Joseph Petrillo  
Mr. and Mrs. Dipti Ravichandran  
Michael Sargent  
Walter Thomas

### \$500 - \$999

Nancy Biberman  
Marcia & Noel Caban  
Henry & Kathleen Chalfant  
Stephen Emmerth  
Paull Hejinian  
Edward Hotchkiss  
Kerry and Aref Jessani  
John Kenny & Ellen McBurney  
Lucas Mignone  
Angela Ortiz  
Thomas Rome  
Seth Silverstein  
Brian Walsh  
Dwight Yellen

### \$250 - \$499

Danielle Ash  
Rachel Ash  
Patricia Batchelor  
Steven Binetter  
James Caras  
Saul Cohen  
Bret Collazzi  
Julie Fink, Esq.  
Hayes Foster  
Felicia Franklin  
Laurent Gautier  
Edward Geffner  
Nick Haddad  
Ryan Karmel  
Ward S Kelman  
Mike Kirshbaum  
Justin Kopa  
Beth Lawrence  
Meredith Leverich  
Ruben Mercado  
Jessica Millett  
Dr. Susana Morales  
Nicholas Nielsen  
Sanjay Pindoria  
Anthony Ramirez II  
Doxene Roberts  
Julia Roberts  
Gordon and Polly Schnell  
Paul and Lindsay Schwartz  
Paul Seifried  
Evan Seiler  
Bill and Karen Silverman  
Lilian Stern  
Anna Vasquez-Howard



**WHEDCO'S URBAN HORIZONS  
BUILDING IN THE SOUTH BRONX**

## BOARD OF DIRECTORS

**Linda Field, Chair**  
Real Estate Management & Development Professional

**Scott Martin, Esq., Treasurer**  
Partner, Hausfeld Global Litigation Solutions

**Sara Kay, Secretary**  
CEO, Bernard and Anne Spitzer Charitable Trust

**Tania Brief, Esq.**  
Attorney, The Bronx Defenders

**Roger Gill**  
Analyst, TOPS Strategies, Marshall Wace Asset Management

**Russell Jackson**  
Chef/Restaurateur, Reverence

**Angela Ortiz**  
Chief Talent Officer & General Counsel, Row New York

**Susan Saegert, PhD**  
Professor, CUNY Graduate Center

**Sean Simmons**  
Vice President, Citi Community Development

**Pamela Sloan, Esq.**  
Partner, Aronson Mayefsky & Sloan, LLP

**Sharmi Sobhan**  
Executive Director, Community Development Group, JPMorgan Chase

**Dana You**  
Chief Operating Officer, Bernard and Anne Spitzer Charitable Trust

## EXECUTIVE TEAM

**Davon Russell**  
President

**Rebecca Kramnick**  
Senior Vice President & General Counsel

**Jonathan Springer**  
Senior Vice President & COO

**Nancy Biberman**  
Founder & President Emerita, WHEDco

## OUR STAFF

Total Number of Employees: 331

Full-Time Staff: 151

Part-Time Staff: 180

\*Approximately 70% of our staff is from or currently lives in the Bronx.

WHEDco  
50 East 168th Street, Bronx, NY 10452  
communications@whedco.org | (718)839-1100  
whedco.org

